

SERVER OPNIC INSTALLATION

Document V1.0

1 General



1.1 Safety warning

- Ensure proper grounding and observe ESD precautions to prevent damage from electrostatic discharge or electromagnetic interference (EMI) during the installation.
- The images in this document are for reference purposes only and may not accurately represent the actual hardware.

1.2 Required Tools

1. Phillips type 1 Screwdriver.

1.3 Before you start

1. Place the server on a stable, grounded table and wear an ESD wristband.
2. To install the OPNIC in its drawer, the drawer must be removed from the server. Take pictures of the original electrical connections.

1.4 Server Compatibility

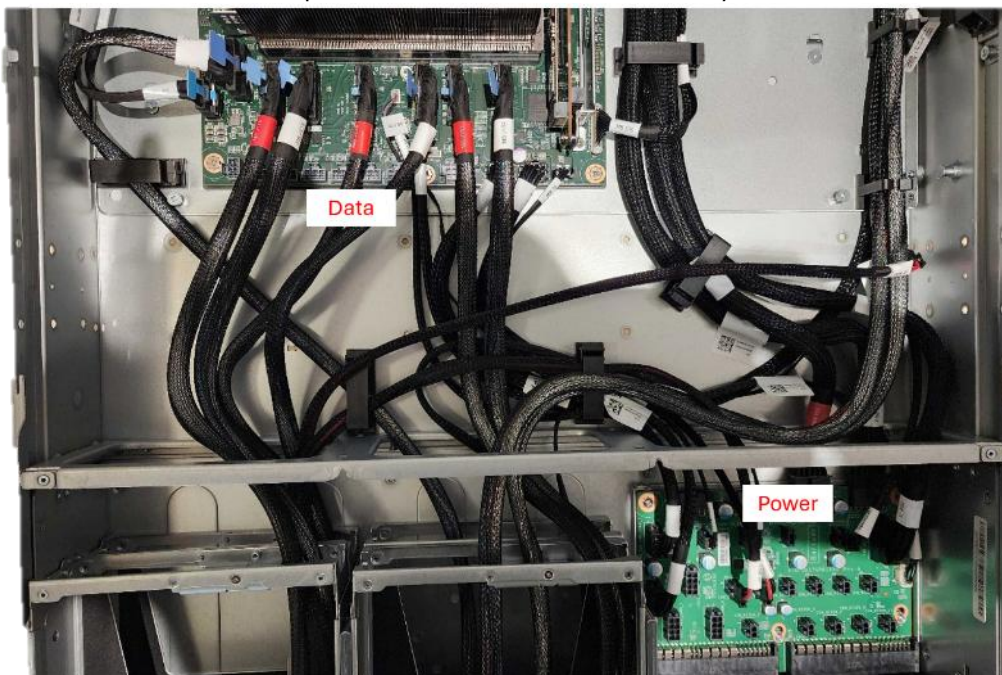
1. This document demonstrates installation in a specific Grace Hopper GH200 server sold by QCT.
2. Installation instructions might vary depending on the exact model.
3. For information about computability with other servers, please contact Quantum Machines

2 OPNIC Installation Process

1. Open the server top cover:



2. Identify an empty tray
3. Disconnect the data and power cables from the relevant tray:



4. Find the relevant springs (maybe a bottom drawer) and apply gentle pressure to remove the tray



5. Gently remove the relevant tray and take out the screws (marked in red). Then, pull out the PCIe tray (marked in yellow).



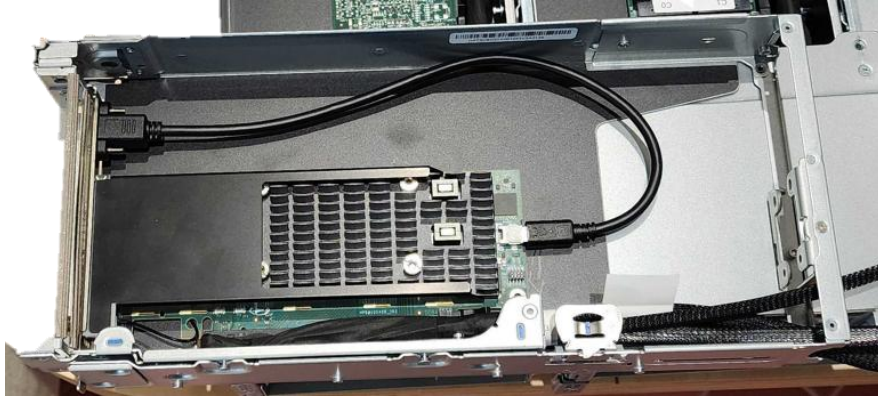
6. Reveal the PCIe connector



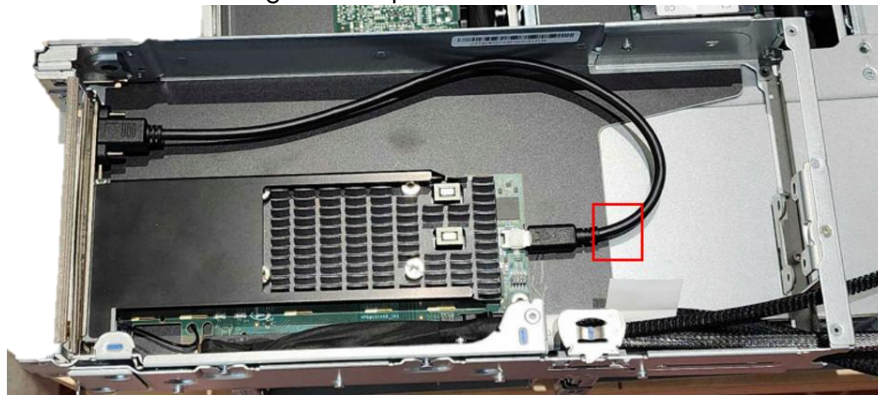
7. Connect the OPNIC module and tighten the screw (marked in red)



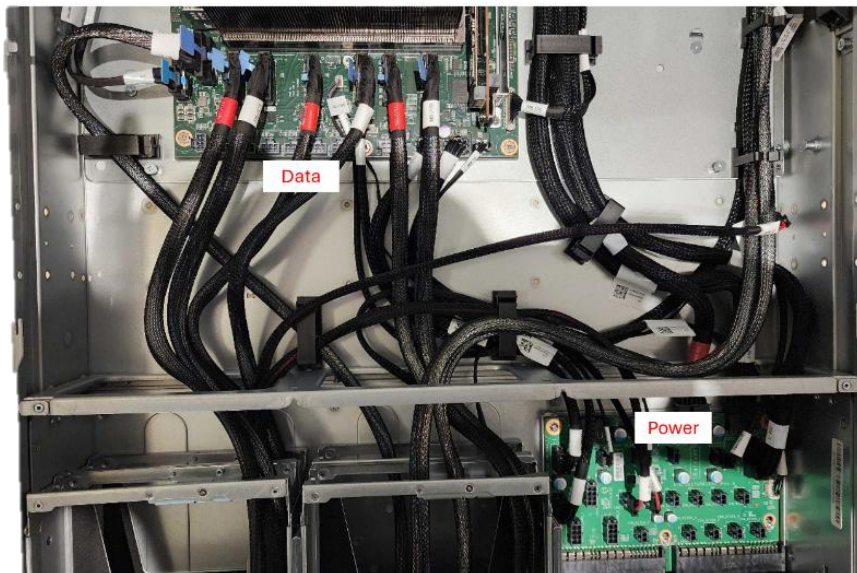
8. Put the module back in its tray and connect the USB cable



9. Secure the USB cable by placing a tie mount under the cable (marked by a red rectangular) and secure it using a tie wrap.



10. Gently return the tray into the server, connect the power and data cable, and close the top cover.



3 Contact Us

For installation issues and assistance, please contact Quantum Machines support. See the documentation website at <http://docs.quantum-machines.co/> for up-to-date support information.